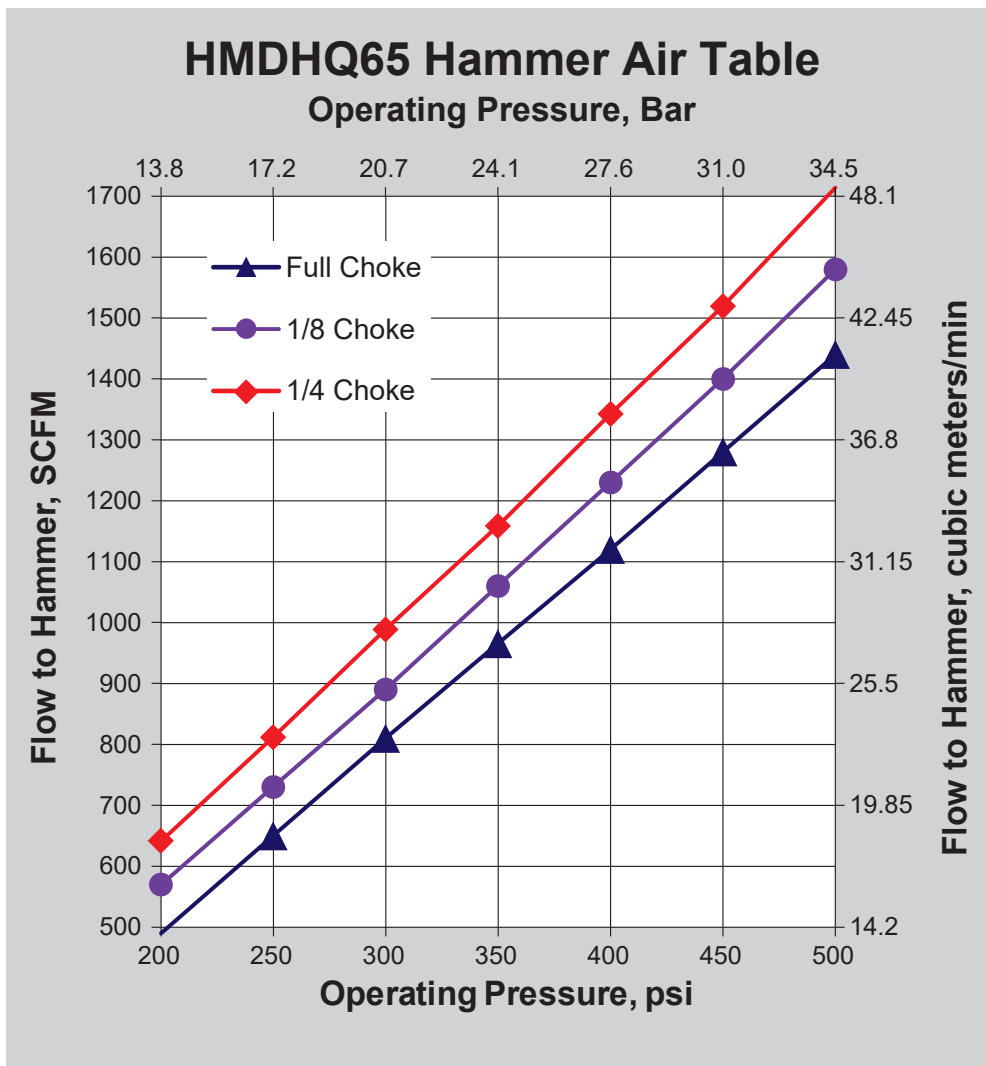


6.5" QL6 MD HAMMER-HMDHQ65&HMDHQ65H

HMDHQ65&HMDHQ65H:

This High Performance Hammer was designed with production drilling in mind. It is best suited for blast hole applications. The HMDHQ65&HMDHQ65H's non-ported, air craft quality steel piston is the only moving part in the hammer which limits internal wear and yields maximum penetration rates. Its wearsleeve is reversible and double heat treated for maximum life.



MMC RYOTEC Corporation

A Group Company of MITSUBISHI MATERIALS

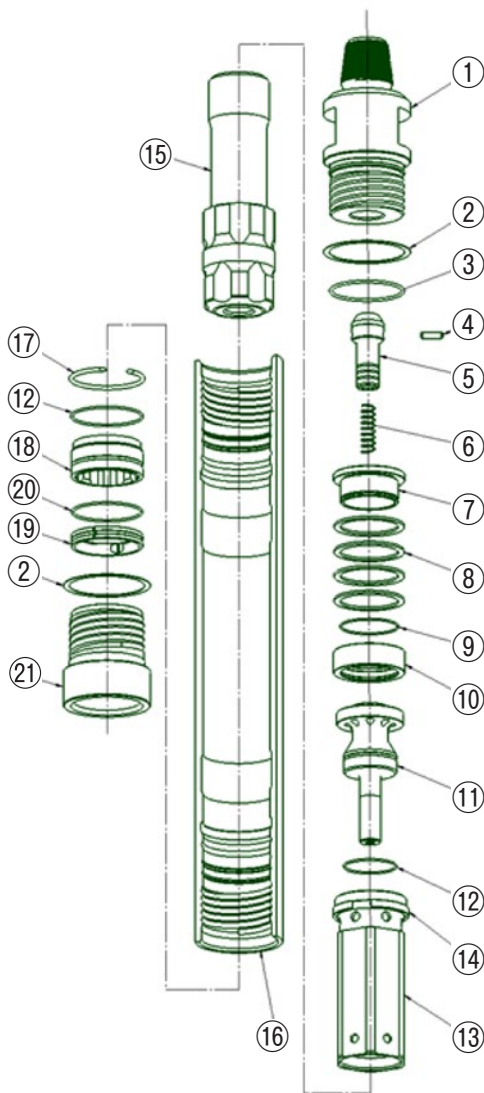
Hammer Specification

		English	Metric
Outside Dia	Regular Mode	5.75 in	146 mm
	Heavy Duty Model	5.90 in	150 mm
Overall Length Without Bit		46.8 in	1189 mm
Operating Length API shoulder to Bit Face		47.2 in	1198 mm
Total Weight	Regular Model	251 lbs	114 kg
	Heavy Duty Model	269 lbs	122 kg
Bore Size		4.75 in	121 mm
Piston Weight		45 lbs	20.4 kg
Drillpipe Connect		3-1/2 Reg API Pin Up others available upon request	
Wrench Flats		4 in	102 mm
Hole Size Range		6-1/2 in to 8-1/2 in	
Bit Shank Required		QL6, with flared skirt	
Minimum Air Volume Required		450 cfm	13 cmm
Maximum Operating Pressure All Models		500 psi	34 bar

Parts List

Shown at the right side of the chart is the quantity of spare parts that should be kept on hand. Level 1 is for water well drilling, Level 3 is for high production drilling.

Model HMDHQ65 & HMDHQ65H



ITEM No	PART No	QTY REQD	PART NAME	WEIGHT		SPARE PARTS ON HAND		
				LBS	KGS	LEVEL 1	LEVEL 2	LEVEL 3
1	HP-BKH-MD651-0016	1	Back Head, 3 1/2" API Reg. Pin Up	46.5	21.14	—	—	1
1	HP-BKH-MD651HD-0017	1	H.D. Back Head, 3 1/2" API Reg. Pin Up	47.5	21.59	—	—	1
2	HP-BOW-0042	2	Break Out Washer	0.03		—	2	4
3	HP-ORG/BKH-0102	1	O-Ring for Back Head	0.01		1	2	4
4	HP-CST-0054	1	Choke Set	0.01		—	—	—
5	HP-CKV-RH6-0048	1	Check Valve Assembly	0.58	0.26	—	—	1
6	HP-CVS-0050	1	Check Valve Spring	0.3	0.14	—	1	2
7	HP-GUR-0084	1	Guide Ring for Spring Pack	1.65	0.75	—	—	—
8	HP-DSC-0078	4	Disc Spring	0.25	0.11	—	—	4
9	HP-ORG/GUR-0117	1	O-Ring for Guide Ring	0.01		—	1	2
10	HP-SPT-0152	1	Spacer Tube	1.64	0.75	—	—	—
11	HP-ADB-MD65-0008	1	Air Distributor	10.5	4.77	—	—	1
12	HP-ORG/ADB-0096	2	O-Ring for Air Distributor and Bearing	0.01		2	4	6
13	HP-CLD-MD65-0075	1	Cylinder Assembly	6.7	3.05	—	1	2
13	HP-CLDB-MD65-0174	1	Cylinder Body	—	—	—	—	—
14	HP-RRG/CLD-0204	1	Cylinder Retaining Ring	0.48	0.22	—	—	—
15	HP-PST-MD65Q2-0126	1	Piston	47.3	21.5	—	1	1
16	HP-WSV-MD65-0163	1	Wear Sleeve	83.4	37.91	1	2	3
16	HP-WSV-MD65HD-0164	1	Heavy Duty Wear Sleeve	98.2	44.64	1	2	3
17	HP-RRG/PST-0139	1	Bearing Retaining Ring	0.16	0.07	—	—	—
18	HP-BRG-MD65Q-0022	1	Bearing	3.7	1.68	—	1	1
19	HP-BRR-0033	1	Bit Retaining Ring	1.49	0.68	—	1	1
20	HP-ORG/BRR-0108	1	O-Ring for Bit Retaining Ring	0.01		1	2	4
21	HP-CHK-MD65Q-0062	1	Chuck	14.7	6.68	2	4	6
21	HP-CHK-MD65QHD-0063	1	Heavy Duty Chuck	15.6	7.09	2	4	6

THE FOLLOWING PARTS ARE SOLD SEPARATE

—	HP-MUW-0182	Make-up Washer						1
—	HP-RBDKIT-MD65Q-0195	Rebuild Kit						
—	HP-RBDKIT-MD65QHD-0217	Heavy Duty Rebuild Kit						

MITSUBISHI MATERIALS, USA CORPORATION

California Office
3535 Hyland Avenue, Suite 200
Costa Mesa, CA 92626
Customer Service: 800.423.1358

North Carolina Rock Tools Office
105 Corporate Center Drive
 Mooresville, NC 28117
Customer Service: 980.312.3150
Fax: 704.746.9595
E-Mail: mmusclt@mmus.com

Toronto Office
3535 Laird Road
Units 15 & 16
Mississauga, Ontario, Canada L5L 5Y7
Main: 905.814.0240
Fax: 905.814.0245