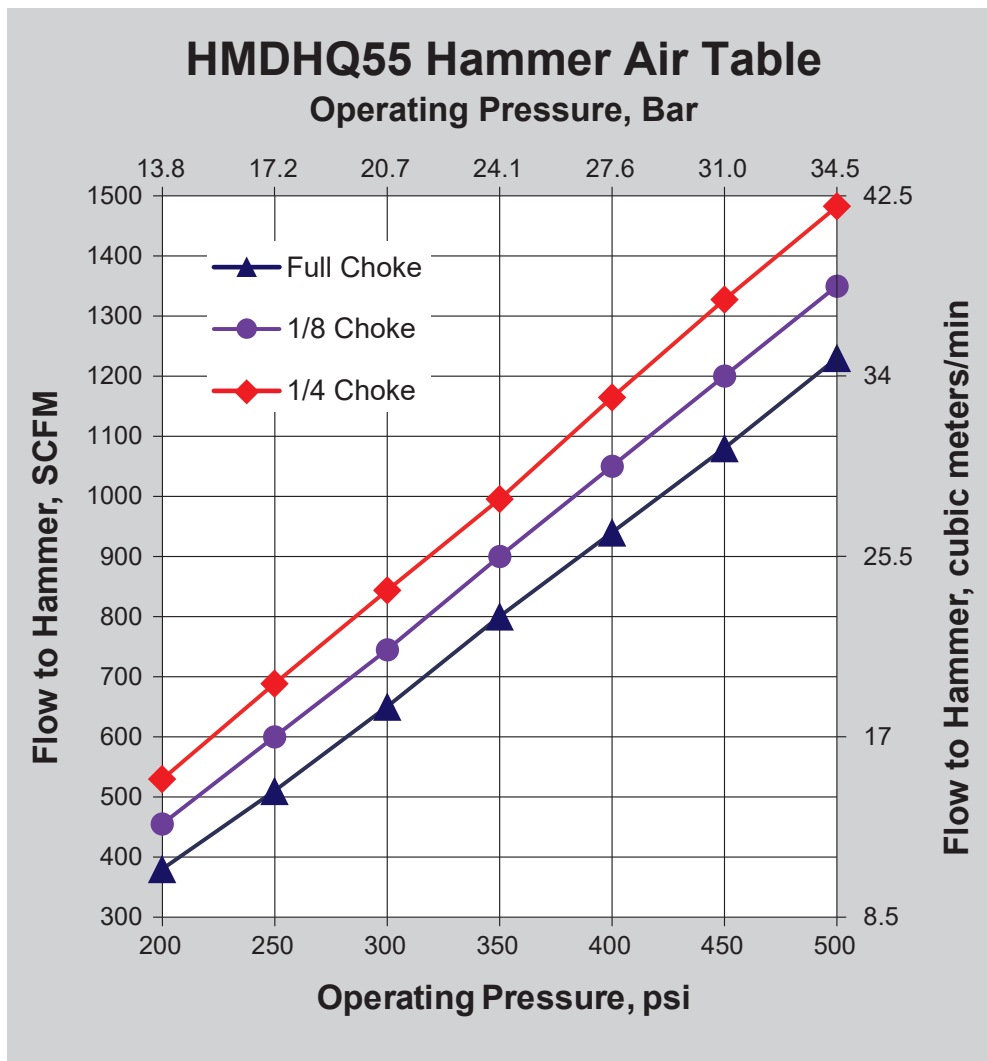


5.5" QL5 MD HAMMER-HMDHQ55

HMDHQ55:

This High Performance Hammer was designed with production drilling in mind. It is best suited for blast hole applications. The **HMDHQ55's** non-ported, air craft quality steel piston is the only moving part in the hammer which limits internal wear and yields maximum penetration rates. Its wearsleeve is reversible and double heat treated for maximum life.



MMC RYOTEC Corporation

A Group Company of MITSUBISHI MATERIALS

QL5

QL50



Shank Length : 9.427"
12 Splines

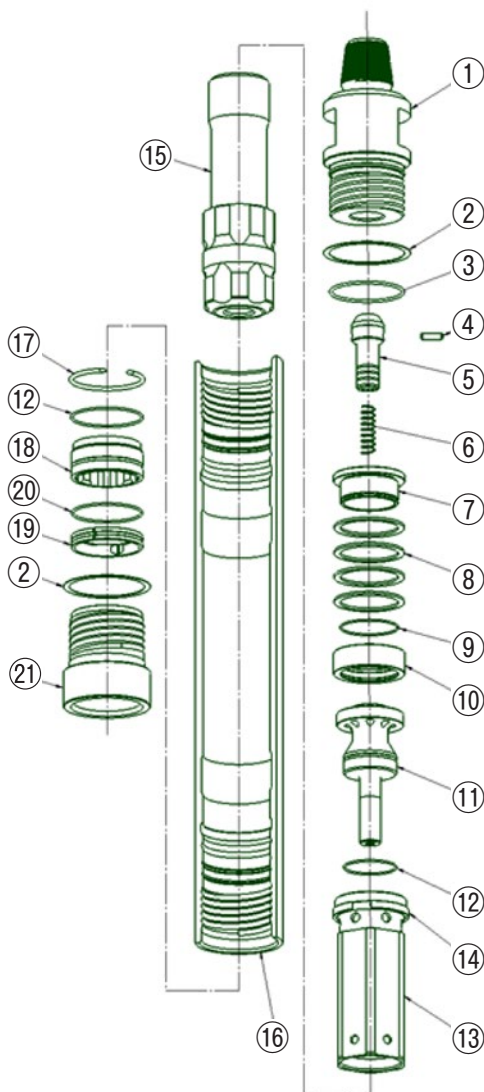
Hammer Specification

	English	Metric
Outside Dia	5.1 in	130 mm
Overall Length Without Bit	44.7 in	1135 mm
Operating Length API shoulder to Bit Face	44.6 in	1133 mm
Total Weight	157 lbs	71.5 kg
Bore Size	4.1 in	104 mm
Piston Weight	31 lbs	14 kg
Drillpipe Connect	3-1/2 Reg API Pin Up others available upon request	
Wrench Flats	3-1/2 in	101.6 mm
Hole Size Range	5-1/2 in to 6 in 140 mm to 152 mm	
Bit Shank Required	QL5, with flared skirt	
Minimum Air Volume Required	250 cfm	7 cmm
Operating Pressure	500 psi	34 bar

Parts List

Shown at the right side of the chart is the quantity of spare parts that should be kept on hand. Level 1 is for water well drilling, Level 3 is for high production drilling.

Model HMDHQ55



ITEM No	PART No	QTY REQD	PART NAME	WEIGHT		SPARE PARTS ON HAND		
				LBS	KGS	LEVEL 1	LEVEL 2	LEVEL 3
1	HP-BKH-MD551-0013	1	Back Head, 3-1/2" API Reg. Pin Up	33	15	-	-	1
2	HP-BOW-0043	2	Breakout Washer	0.03	0	-	2	4
3	HP-ORG/BKH-0101	1	O-Ring for Back Head	0.01		1	2	4
4	HP-CST-0054	1	Choke Set	0.01		-	-	-
5	HP-CKV-RH6-0048	1	Check Valve Assembly	0.58	0.26	-	-	1
6	HP-CVS-0050	1	Check Valve Spring	0.3	0.14	-	1	2
7	HP-GUR-0085	1	Guide Ring for Spring Pack	0.9	0.41	-	-	-
8	HP-DSC-0080	4	Disc Spring	0.25	0.11	-	-	4
9	HP-ORG/GUR-0116	1	O-Ring for Guide Ring	0.01		-	1	2
10	HP-SPT-0154	1	Spacer Tube	2.16	0.98	-	-	-
11	HP-ADB-MD55-0005	1	Air Distributor	6.3	2.86	-	-	1
12	HP-ORG/ADB-0095	2	O-Ring for Air Distributor & Bearing	0.01		2	4	6
13	HP-CLD-MD55-0073	1	Cylinder Assy. (Includes Cyl Ret Ring)	8.28	3.8	-	1	2
13	HP-CLDB-MD55-0171	1	Cylinder Body	-	-	-	-	-
14	HP-RRG/CLD-0201	1	Cylinder Retaining Ring	0.48	0.2	-	-	-
15	HP-PST-MD55Q-0125	1	Piston	31	14.1	-	1	1
16	HP-WSV-MD55-0160	1	Wear Sleeve	75	34.1	1	2	3
17	HP-RRG/PST-0140	1	Bearing Retaining Ring	0.14	0.064	-	-	-
18	HP-BRG-MD55Q-0021	1	Bearing	2.8	1.273	-	1	1
19	HP-BRR-0034	1	Bit Retaining Ring	0.65	0.295	-	1	1
20	HP-BRG-0025	1	O-Ring for Bit Retaining Ring	0.01		1	2	4
21	HP-CHK-MD55Q-0059	1	Chuck	14	6.4	2	4	6

THE FOLLOWING PARTS ARE SOLD SEPARATE

-	HP-MUW-0179	Make-up Washer						1
-	HP-RBDKIT-MD55Q-0189	Rebuild Kit						

MITSUBISHI MATERIALS, USA CORPORATION

California Office

3535 Hyland Avenue, Suite 200
Costa Mesa, CA 92626
Customer Service: 800.423.1358

North Carolina Rock Tools Office

105 Corporate Center Drive
Mooreville, NC 28117
Customer Service: 980.312.3150
Fax: 704.746.9595
E-Mail: mmusclt@mmus.com

Toronto Office

3535 Laird Road
Units 15 & 16
Mississauga, Ontario, Canada L5L 5Y7
Main: 905.814.0240
Fax: 905.814.0245