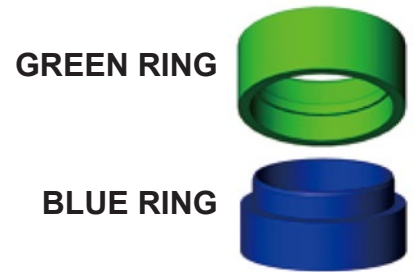


# MD HAMMER - INSTALLING THE CYLINDER

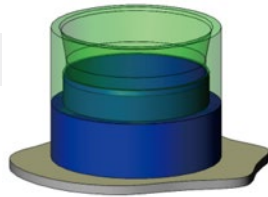
## KIT CONTAINS (2) RINGS:

NOTE: The rings are given a color here to make it easier to understand the assembly procedure. The actual rings you receive will not be colored.



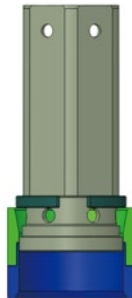
### STEP #1

Stack rings on a solid surface.



### STEP #2

Set cylinder into rings.



### STEP #3

Set piston into cylinder and hammer cylinder into rings until cylinder hits surface

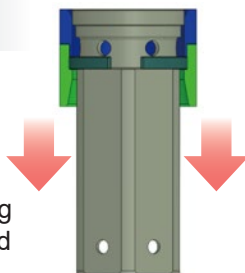
A few high force blows work best



### STEP #4

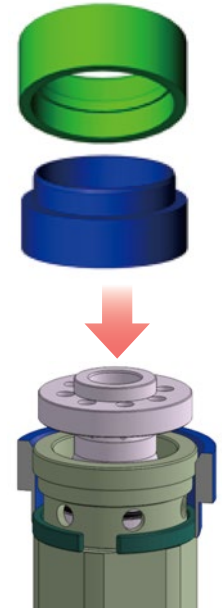
Slide green Ring off of Cylinder

At this point the blue ring stays on the cylinder. Keeping the retaining ring compressed in the cylinder groove



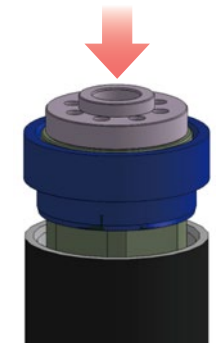
### STEP #5

Push the air dist. into the cylinder.



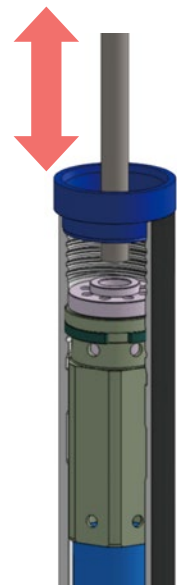
### STEP #6

Set cylinder and blue ring into top of wear sleeve



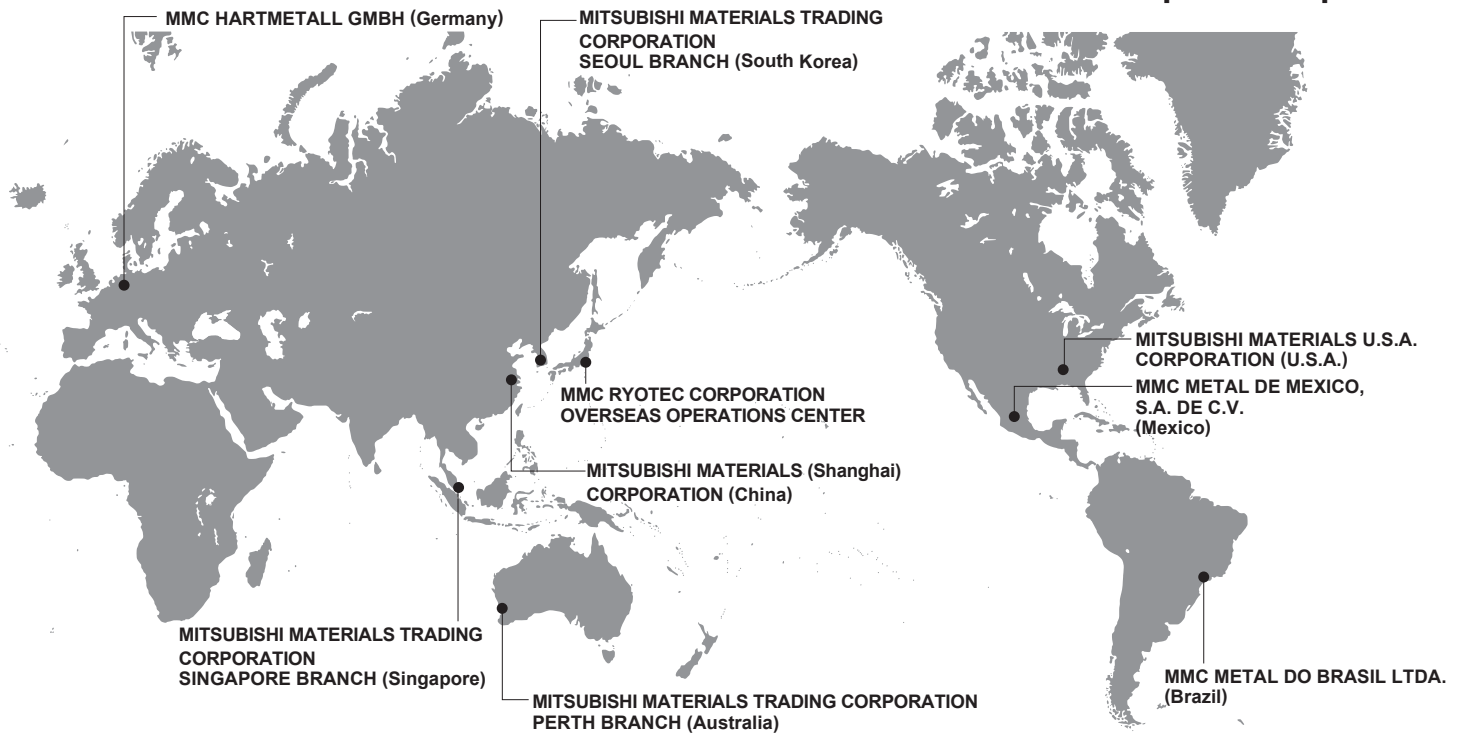
### STEP #7

Using a heavy bar or sledge, drive the cylinder into the sleeve until it comes to a hard stop. Remove the blue ring.



**MMC RYOTEC Corporation**

A Group Company of  MITSUBISHI MATERIALS



# MMC RYOTEC Corporation

A Group Company of  MITSUBISHI MATERIALS

## JAPAN / ROCK TOOLS

**MMC RYOTEC CORPORATION**  
**TOKYO OFFICE [Overseas Operations Center]**  
 KFC Bldg. 7F, 1-6-1 Yokoami, Sumida-ku, Tokyo 130-0015  
 TEL +81-3-5819-8723  
 E-Mail: [rocktool@mmc.co.jp](mailto:rocktool@mmc.co.jp)

<http://www.ryotec.co.jp/en/>



### Subsidiaries of MITSUBISHI MATERIALS CORPORATION

U.S.A.	<b>MITSUBISHI MATERIALS U.S.A. CORPORATION</b> 105 Corporate Center Dr. Suite A, Mooresville, NC 28117, U.S.A TEL +1-980-312-3150 FAX +1-704-746-9595 E-Mail: <a href="mailto:mmusclt@mmus.com">mmusclt@mmus.com</a>	Australia	<b>MITSUBISHI MATERIALS TRADING CORPORATION PERTH BRANCH</b> Suite 10, 137 Kewdale Road, Kewdale, WA 6105, Australia TEL +61-8-6258-7200 FAX +61-8-6258-5614 E-Mail: <a href="mailto:ml-sales@mmtc.co.jp">ml-sales@mmtc.co.jp</a> Website: <a href="https://www.mmtc.co.jp/au/">https://www.mmtc.co.jp/au/</a>
Germany	<b>MMC HARTMETALL GMBH</b> Comeniusstr. 2, 40670 Meerbusch, Germany TEL +49-2159-9189-32 FAX +49-2159-9189-30079 E-Mail: <a href="mailto:rocktools@mmchg.de">rocktools@mmchg.de</a>	South Korea	<b>MITSUBISHI MATERIALS TRADING CORPORATION SEOUL BRANCH</b> #1812 Samsung Cheil Bldg., 309, Teheran-ro, Gangnam-gu, Seoul 06151, South Korea TEL +82-2-3474-2331 FAX +82-2-527-2834 Email: <a href="mailto:mb-rocktool@mmtc.co.jp">mb-rocktool@mmtc.co.jp</a> Website: <a href="https://www.mmtc.co.jp/en/">https://www.mmtc.co.jp/en/</a>
Brazil	<b>MMC METAL DO BRASIL LTDA.</b> Rua Cincinato Braga, 340 13º andar, Bela Vista-CEP 01333-010 São Paulo-SP., BRASIL TEL +55-11-3262-5095 FAX +55-11-3285-4906 E-Mail: <a href="mailto:mabr@mabr.com.br">mabr@mabr.com.br</a>	Singapore	<b>MITSUBISHI MATERIALS TRADING CORPORATION SINGAPORE BRANCH</b> 10 Anson Road, #32-09 International Plaza, Singapore 079903 TEL +65-6221-7233 FAX +65-6325-4220 Email: <a href="mailto:mb-rocktool@mmtc.co.jp">mb-rocktool@mmtc.co.jp</a> Website: <a href="https://www.mmtc.co.jp/en/">https://www.mmtc.co.jp/en/</a>
Mexico	<b>MMC METAL DE MEXICO S.A. DE C.V.</b> Av. La Canada No.16 Parque Industrial Bernardo Quintana El marques, Queretaro. TEL +52-442-221-6136 +52-442-221-6137 FAX +52-442-221-6134 E-Mail: <a href="mailto:gonzalez@mmcex.com">gonzalez@mmcex.com</a>	China	<b>MITSUBISHI MATERIALS (SHANGHAI) CORPORATION</b> 2101 Tower 1, Raffles City, 1133 Changning Road Changning District, Shanghai, 200051, China TEL :+86-(0)21-6235-0745 FAX :+86-(0)21-6235-0741 Inquiry form : <a href="http://www.mmc.sh.cn/contact-us/">http://www.mmc.sh.cn/contact-us/</a>